

PRODEMAND

YMMS: 2016 Mazda 3 Grand Touring
Engine: 2.5L Eng
VIN:

May 31, 2022
License:
Odometer:

MULTIPLE ELECTRICAL MALFUNCTIONS AFTER BODY REPAIR

TECHNICAL SERVICE BULLETIN

Reference Number(s): 09-010/19, Date of Issue: August 07, 2019

MAZDA: 2016-2019 CX-3; 2013-2019 CX-5; 2016-2019 Mazda2; 2014-2018 Mazda3; 2014-2019 Mazda6

Superseded Bulletin(s): 09-010/19, Date of Issue: 02/05/2019
, 09-035/18, Date of Issue: 09/14/2018
, 09-059/16, Date of Issue: 11/29/2016
, 09-022/14, Date of Issue: 05/30/2014, 05/20/2014

BULLETIN NOTES

This bulletin supersedes the previously issued bulletin(s) listed below: The changes are noted below.

PREVIOUSLY ISSUED BULLETIN LIST

Previous TSBs:	Date(s) Issued:
09-010/19	02/05/2019
09-035/18	09/14/2018
09-059/16	11/29/2016
09-022/14	05/30/2014, 05/20/2014

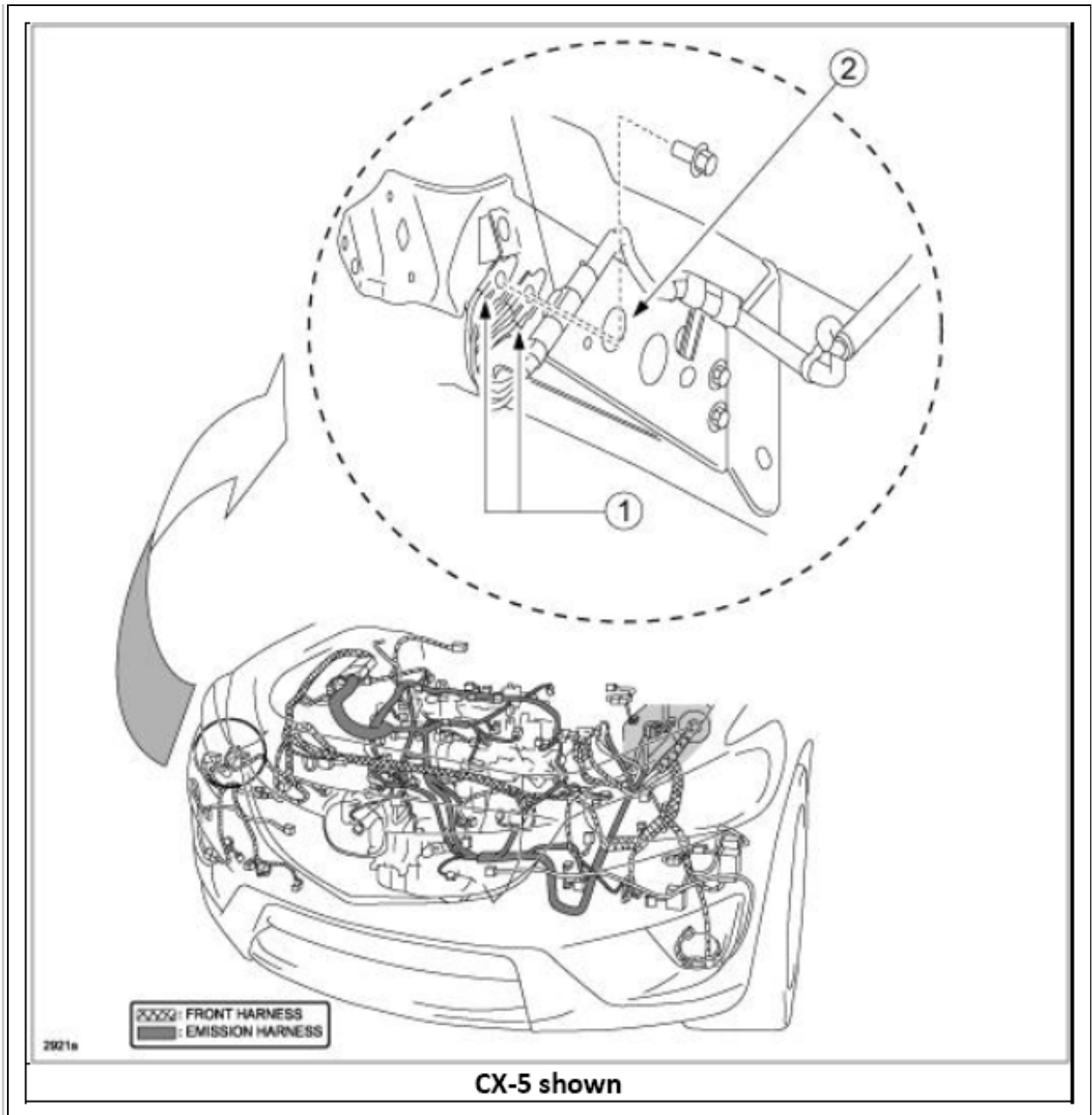
APPLICABLE MODEL(S)/VINS

2016-2019 CX-3
2013-2019 CX-5
2016-2019 Mazda2
2014-2018 Mazda3
2014-2019 Mazda6

DESCRIPTION

Some customers may experience one or more electrical malfunctions after a vehicle body repair. The newly painted fender stay (2) may be causing a poor front harness (1) ground connection.

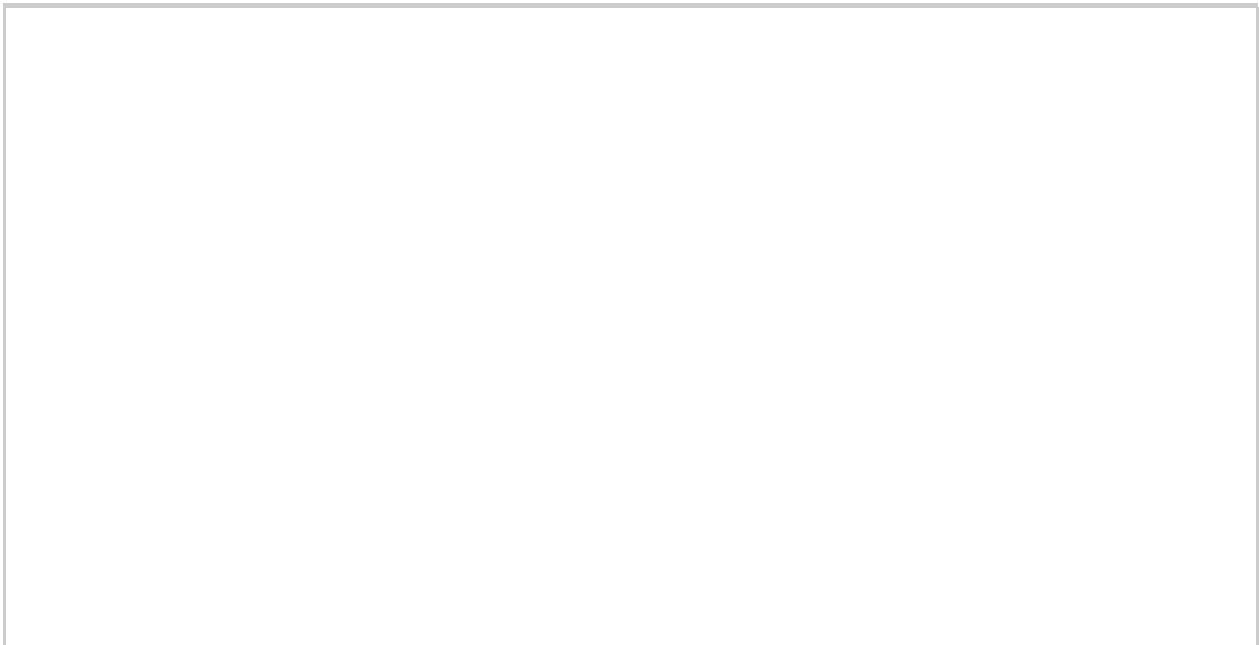


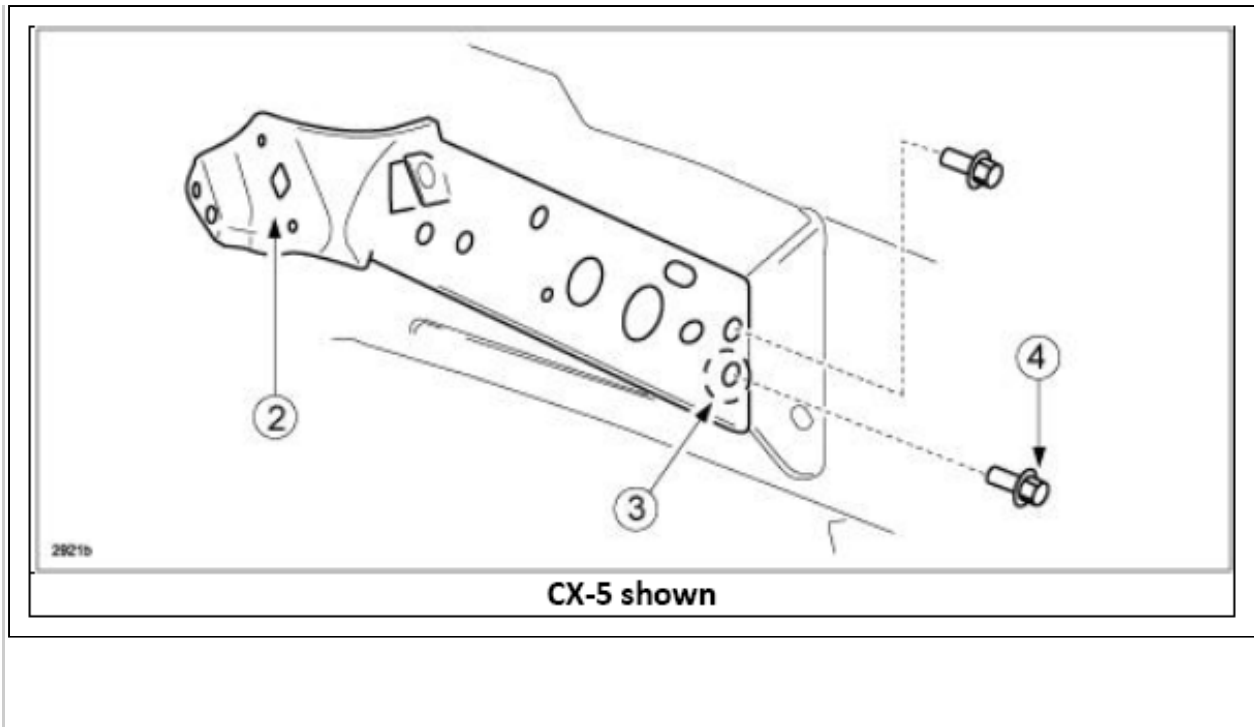


MODEL	YEAR	SYMPTOMS
CX-5	2013-2019	<p>Symptom 1:</p> <ul style="list-style-type: none"> The customer states: <ul style="list-style-type: none"> Headlights flash ON and OFF Check engine light ON Heater blower stopped Engine stalled During the dealer visit, the engine had a slow crank and no start. After charging the battery, the engine starts and the symptoms related to headlight and heater blower operation are duplicated.
		<p>Symptom 2:</p> <ul style="list-style-type: none"> The customer states that the engine stalled while driving and does not restart.

		<ul style="list-style-type: none"> Vehicle inspection finds: <ul style="list-style-type: none"> M-MDS cannot identify the vehicle Electric cooling fans are ON Ignition cannot be turned OFF Multiple warning lights in the instrument cluster are ON
Mazda3	2014-2018	Immediately after body repair (front fender stay), the following instrument cluster warning lights are ON: <ul style="list-style-type: none"> ABS, Brake, DSC TPMS DTC U3003:16 - Battery Power Supply
Mazda6	2014-2019	Symptom 1: <ul style="list-style-type: none"> The customer states that multiple warning lights in the instrument cluster are ON while driving. Multiple DTCs are stored in multiple modules' memory: <ul style="list-style-type: none"> C0023:62, C1001:92, U0121:00 [EPS], U0121:00 [IC], U0121:00 [SCB], U0121:00 [PCM], U0121:00 [SSU], U0401 [BSM], U0415:00, U2005:86 [FSC]
		Symptom 2: <ul style="list-style-type: none"> Gear shift indicator is not activated if vehicle is started by push button start.
Mazda2	2016-2019	<ul style="list-style-type: none"> Windshield wipers turn on by themselves when front turn lights or other front lights are on. No DTCs are stored in memory.
CX-3	2016-2019	<ul style="list-style-type: none"> Windshield wipers turn on by themselves when front turn lights or other front lights are on. No DTCs are stored in memory.

The front fender stay (2) newly painted surface at ground point (3), where attachment bolt (4) is seated, may create a poor front harness ground connection.



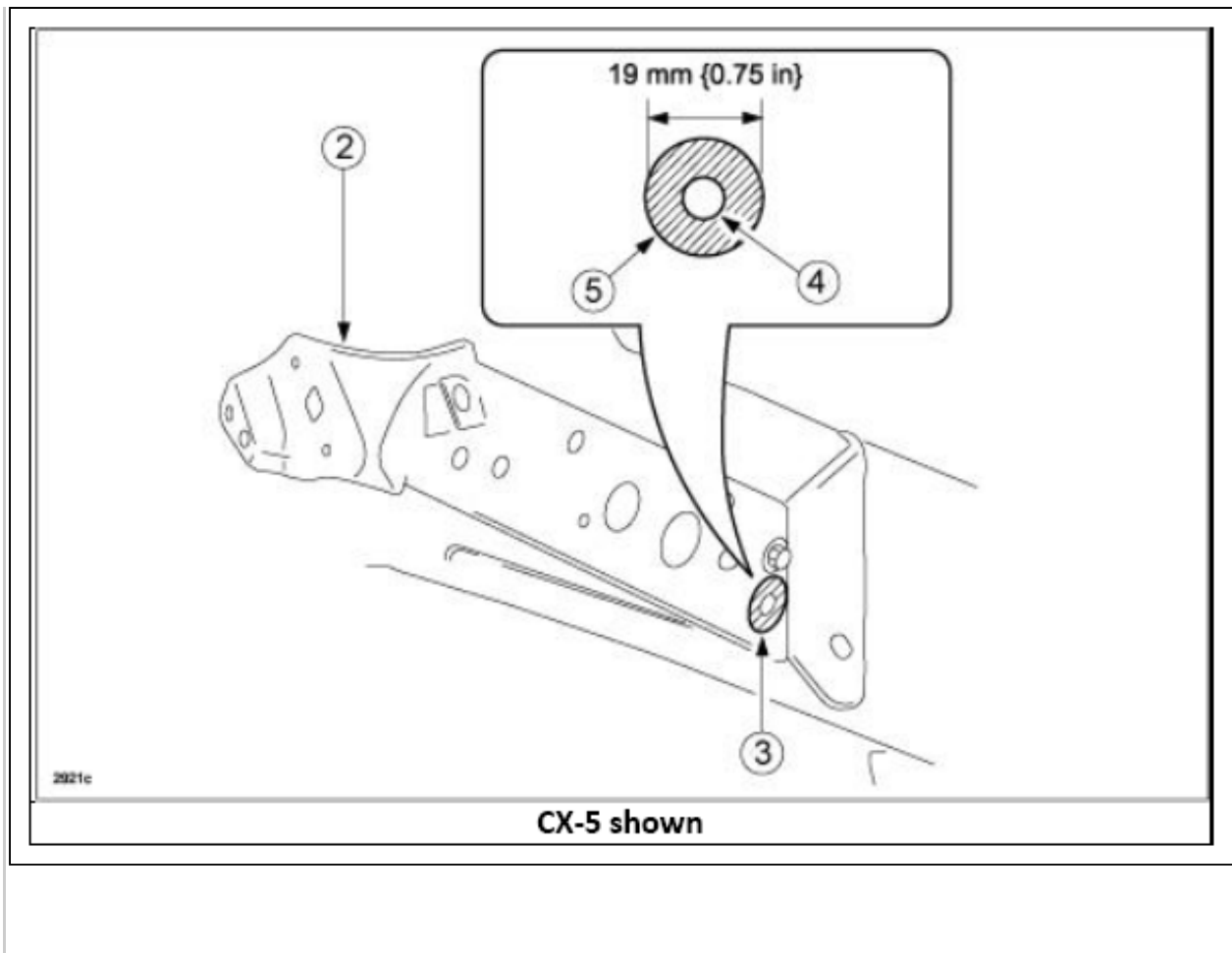


NOTE: Do not paint ground point (3) where attachment bolt (4) is seated.

Customer concern can be resolved by sanding off paint at ground point (3) where attachment bolt (4) is seated. After installing the bolt (4), apply touch-up paint to the exposed base material area of the front fender stay.

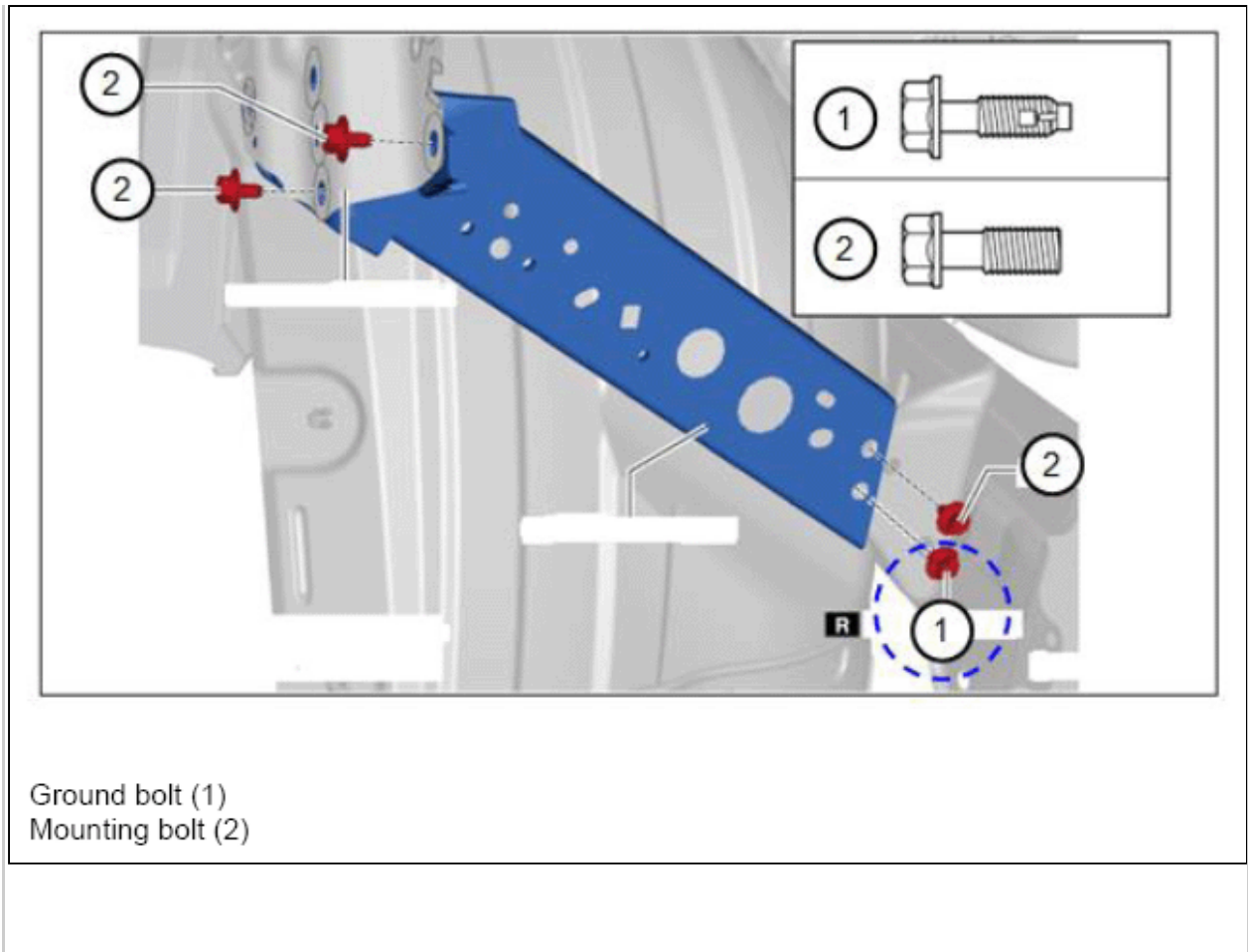
NEWLY INSTALLED FRONT FENDER STAY NOTE

CAUTION: If the bolt (4) contact area (3) is painted when the front fender stay (2) is newly replaced, it could cause a malfunction in the PCM. Before painting a newly replaced part, protect the bolt (4) contact area (3) with masking tape (5) as shown in the figure.



NOTE: After installing the bolt (4), apply touch-up paint to the exposed base material area of the front fender stay.

NOTE: Always replace the ground bolt (1) if the Workshop Manual or Bodyshop Manual instructs to use the ground bolt for proper grounding.



WARRANTY COMPLIANCE NOTE

Vehicle repairs for this concern are not covered under Mazda's warranty policy.